



# kennett®

**Construction** 100% cotton fabric with a starch coating (natural texture free of heavy metal colorants, odor free and pH neutral)

**Specifications** Conforms to ANSI L29.1-1977 Standard for Group B cloth. Meets Manufacturing Standards and Specifications for Group B cloth as established by the State Instructional Materials Review Association (SIMRA), Association of American Publishers (AAP), and the Book Manufacturing Institute (BMI).

**Origin** Manufactured in the USA

**Standard Width** 54" (137.16 cm) Width;  
3" (7.62 cm) ID standard cores

**Converting** Full-width rolls, slit rolls, and cut-sheets

**Adhesive/Glue** Acceptable gluing includes: Protein, Polyvinyl Acetate (PVA), Polyurethane (PUR), and Hot Melt

**Colors** While supplies last – available in 6 classic colors

**Decoration** Can be foil stamped, blind stamped, and screen printed

**Suggested Uses** Yearbooks, Stationery, Spine Wraps, Religious Publishing, Perfume Packaging, Menus, Journals, Game Boards, Display/POP, Coffee Table Books, Art/Architecture Books, Luxury Packaging, Trade Publications, Spirits Packaging, Scrapbooks, Photo Books, Notebooks, Looseleaf Binders, Jewelry Packaging, CD/DVD Packaging, Diaries, Book Covers, Albums, 3-Piece Covers, On-Demand

Kennett® has an ideal natural look and feel that only cotton can provide. Offered in a range of classic colors. It is excellent for book covers, luxury packaging such as perfume and jewelry boxes, and spirit packaging. Kennett® decorates beautifully with foil stamping and holds debossing well to show depth.

**Samples available upon request**



*100% employee-owned*

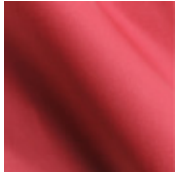
1801 Thompson Ave.  
Des Moines, IA 50316-2751

P 800.247.5323

[www.lbsbind.com](http://www.lbsbind.com)  
[info@lbsbind.com](mailto:info@lbsbind.com)



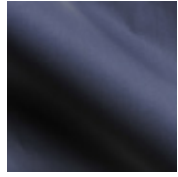
# kennett® collection



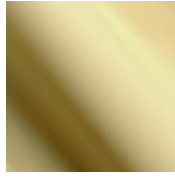
Valentine 67130



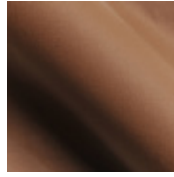
Blue 49508



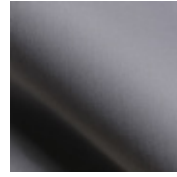
Navy 49601



Wheat 36301



Pecan 39860



Slate 18290

Visit [www.lbsbind.com](http://www.lbsbind.com) to see our most current color selection.