



# lipare

<b>Construction</b>	Coated paper
<b>Standard Width</b>	41.75" (106.05 cm) Width; 3" (7.62 cm) ID standard cores
<b>Converting</b>	Full-width rolls, slit rolls, and cut-sheets
<b>Adhesive/Glue</b>	Acceptable gluing includes: Protein, Polyvinyl Acetate (PVA), Polyurethane (PUR), and Hot Melt
<b>Colors</b>	7 classic colors
<b>Decoration</b>	Can be foil stamped, blind stamped, and screen printed
<b>Suggested Uses</b>	Yearbooks, Trade Publications, Stationery, Spirits Packaging, Spine Wraps, Scrapbooks, Religious Publishing, Photo Books, Perfume Packaging, Notebooks, Menus, Looseleaf Binders, Journals, Jewelry Packaging, Game Boards, DVD/CD Packaging, Display/POP, Diaries, Coffee Table Books, Book Covers, Art/Architecture Books, Albums, 3-Piece Covers, Luxury Packaging, Library Binding, On-Demand

Lipare is a coated paper with a leather-like appearance. This material is perfect for turned-edge book covers, journals, binders, and menus. It is also excellent for luxury packaging such as perfume and jewelry boxes and spirit packaging. Lipare decorates beautifully with foil stamping, blind embossing, or screen printing.

**Samples available upon request**



*100% employee-owned*

1801 Thompson Ave.  
Des Moines, IA 50316-2751  
P 800.247.5323 • 515.262.3191  
[www.lbsbind.com](http://www.lbsbind.com)  
[info@lbsbind.com](mailto:info@lbsbind.com)



## lipare collection



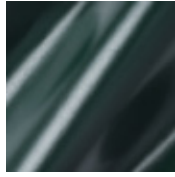
Signal 26243



Red 26244



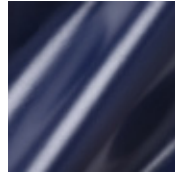
Burgundy 26245



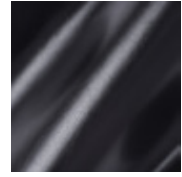
Pine 26247



Ultramarine 26248



Midnight 26249



Black 26252

Visit [www.lbsbind.com](http://www.lbsbind.com) to see our most current color selection.