



maple

Construction	Coated paper
Standard Width	41.75" (106.05 cm) Width; 3" (7.62 cm) ID standard cores
Converting	Full-width rolls, slit rolls, and cut-sheets
Minimum Order	1 roll
Adhesive/Glue	Acceptable gluing includes: Protein, Polyvinyl Acetate (PVA), Polyurethane (PUR), and Hot Melt
Colors	1 color
Decoration	Can be foil stamped, blind stamped, and screen printed
Suggested Uses	Yearbooks, Trade Publications, Stationery, Spirits Packaging, Spine Wraps, Scrapbooks, Religious Publishing, Photo Books, Perfume Packaging, Notebooks, Menus, Looseleaf Binders, Journals, Jewelry Packaging, Game Boards, DVD/CD Packaging, Display/POP, Diaries, Coffee Table Books, Book Covers, Art/Architecture Books, Albums, 3-Piece Covers, Luxury Packaging, Library Binding, On-Demand

The Maple design is a wood grain that highlights the tranquility of nature, and is an elegant background for menus, calendars, luxury or hospitality packaging, binders, journals, and photo books. Maple is a coated paper, which provides excellent results with foil stamping, blind stamping, and screen printing.

Samples available upon request

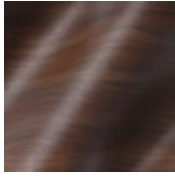


100% employee-owned

1801 Thompson Ave.
Des Moines, IA 50316-2751
P 800.247.5323
www.lbsbind.com
info@lbsbind.com



maple collection



Coffee 28555

Visit www.lbsbind.com to see our most current color selection.