



silktouch nuba by skivertex[®]

Construction Latex-saturated paper with a polyurethane (soft-touch) topcoat

Specifications FSC[®] Certified

Origin Manufactured in the USA

Standard Width 54" (137.16 cm) Width; 3" (7.62 cm) ID standard cores

Caliper 7-pt. = 105# Text C1S

Converting Full-width rolls, slit rolls, and cut-sheets available

Minimum Order 1 roll

Adhesive/Glue Acceptable gluing includes: Protein, Polyvinyl Acetate (PVA), Polyurethane (PUR), and Hot Melt

Colors 13 colors

Finishes Antique

Decoration Can be foil stamped, blind stamped, and screen printed

Suggested Uses Albums, Bookbinding, Stationery, Spirits Packaging, Scrapbooks, Perfume Packaging, Jewelry Packaging, Hobbies & Crafts, Looseleaf Binders, Menus, Hospitality, Office Products, Point of Purchase, Portfolios, Hinged Box Wrap, Rigid Setup Box Wrap, Slip Cases, Datebooks, Diary Covers

Silktouch Nuba by Skivertex[®] is a European inspired, latex-saturated, premium grade, simulated leather covering material. It has the appearance and feel of rich nubuck leather. It can be used as a bookbinding or luxury packaging material.

**Samples available
upon request**



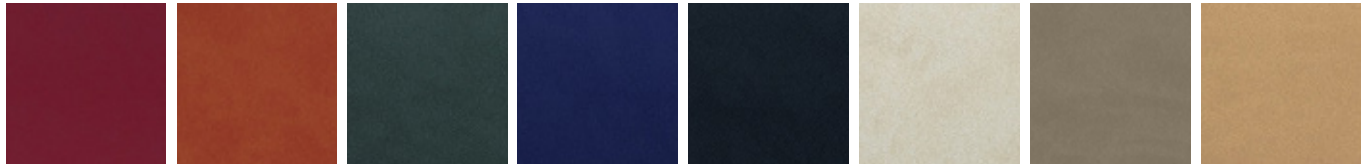
100% employee-owned

1801 Thompson Ave.
Des Moines, IA 50316-2751
P 800.247.5323 • 515.262.3191
www.lbsbind.com
info@lbsbind.com



silktouch nuba by skivertex® collection

ANTIQUE ANILINE



9068 Red

9083 Russet

9077 Green

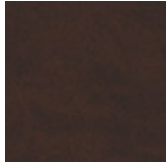
9070 Blue

9078 Navy

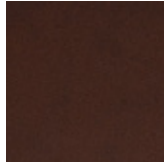
9066 Creme

9082 Lichen

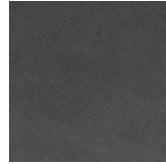
9080 Beige



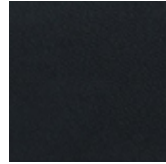
9081 Chocolate Brown



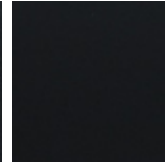
9073 Dark Brown



9076 Gray



9071 Black



9065 Black

Visit www.lbsbind.com to see our most current color selection.

FSC® CO11724

FSC®-certified products available